

NORM'S FABRICATION

W8TTH

2201 Porter Hwy., Adrian, MI 49221-9782
517-263-7363 or 517-902-6967

Please check out our website at www.normsfab.com
For all your tower hardware needs.

Customized welding and fabrication also available.

If you don't see what you need, please ask.

Guy Brackets

Torque Arms

Top Plates

Rotor Plates

Guy Brackets
and Torque Arms

Made for Rohn 25/45/55



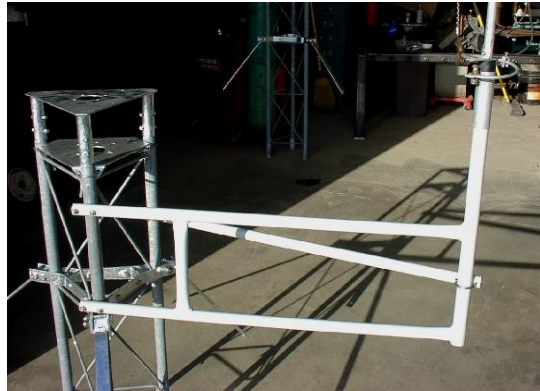
Base Plates

Made for Rohn 25/45/55



Rotor Plates

Made for Rohn 25
and American Tower



Standoffs



Hinged Base Plates

Made for Rohn 25/45



Rotor Plates

Made for Rohn 45 and 55



Equalizer Plates

House Brackets

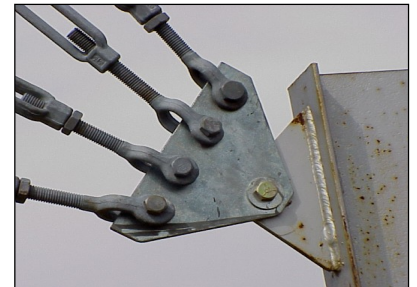
Hinged Base Plates

Standoffs

Equalizer Plates

(3 pcs to a set)

Available in 3, 4, & 5 guy sets



House Brackets

Made for Rohn 25/45/55



Top Plates

Medium duty made for Rohn 25
and American Tower
(Heavy duty R25/45/55 available)



Order Form

Galvanized Guy Brackets and Torque Arm sets (including zinc plated hardware)

(Torque arms can also be sold separately)

Made for Rohn 25 \$130.00 per set = _____
plus \$20.00 S &H per set* = _____

with stainless steel hardware add \$40.00 per set = _____

Made for Rohn 45 \$170.00 per set = _____
plus \$30.00 S & H per set* = _____

with stainless steel hardware add \$60.00 per set = _____

Made for Rohn 55 \$200.00 per set = _____
plus \$30.00 S & H per set* = _____

with stainless steel hardware add \$70.00 per set = _____

Heavy Duty Star Torque Arm Brackets (including zinc plated hardware)

Made for Rohn 25 \$400.00 per set = _____
plus \$100.00 S & H per set* = _____

Made for Rohn 45/55 \$500.00 per set = _____
plus \$100.00 S & H per set* = _____

Galvanized Equalizer Plates (3 pc. Sets)

Three guy sets \$60.00 per set = _____

Four guy sets \$70.00 per set = _____

Five guy sets \$80.00 per set = _____

plus \$20.00 S & H per set* = _____

Powder coated Standoffs (including zinc plated hardware)

(for most towers)

\$100.00 per set = _____

plus \$30.00 S & H per set* = _____

with stainless steel hardware add \$25.00 per set = _____

Rohn BX Adapter for Standoffs \$50.00 per set = _____

shipping free w/standoff purchase

Rotor Plates (including zinc plated u-bolts)

Made for Rohn 25 \$60.00 each = _____
plus \$25.00 S & H per plate* = _____

with stainless steel u-bolts add \$20.00 each = _____

Made for Rohn 45 \$150.00 each = _____
plus \$35.00 S & H per plate* = _____

with stainless steel u-bolts add \$50.00 each = _____

Made for Rohn 55 \$170.00 each = _____
plus \$40.00 S & H per plate* = _____

with stainless steel u-bolts add \$60.00 each = _____

Made for American Tower \$60.00 each = _____
plus \$25.00 S & H per plate* = _____

with stainless steel u-bolts add \$20.00 each = _____

Top Plates (including zinc plated bolts)

Medium Duty made for Rohn 25 \$100.00 each = _____
(Set up for Yaesu 65 thrust bearing) plus \$30.00 S & H per plate* = _____

Medium Duty over the leg made for Rohn 25 \$100.00 each = _____
(Set up for Yaesu 65 thrust bearing) plus \$30.00 S & H per plate* = _____

Medium Duty made for American Tower \$100.00 each = _____
(Set up for Yaesu 65 thrust bearing) plus \$30.00 S & H per plate* = _____

Heavy Duty made for Rohn 25 \$150.00 each = _____
(Set up for Rohn thrust bearing) plus \$40.00 S & H per plate* = _____

Heavy Duty made for Rohn 45 \$250.00 each = _____
(Set up for Rohn thrust bearing) plus \$55.00 S & H per plate* = _____

Heavy Duty made for Rohn 55 \$250.00 each = _____
(Set up for Rohn thrust bearing) plus \$55.00 S & H per plate* = _____

Adaptor plate for Heavy Duty Top plates to \$60.00 each = _____
convert from Rohn thrust bearing hole to plus \$15.00 S & H per plate* = _____
a Yaesu 65 thrust bearing hole

House Brackets

0-15" House Brackets made for Rohn 25

\$150.00 each = _____
plus \$35.00 S & H per bracket* = _____

0-25" House Brackets made for Rohn 25

\$170.00 each = _____
plus \$40.00 S & H per bracket* = _____

0-36" House Brackets made for Rohn 25

\$190.00 each = _____
plus \$70.00 S & H per bracket* = _____

0-15" House Brackets made for Rohn 45 & Rohn 55

\$180.00 each = _____
plus \$35.00 S & H per bracket* = _____

0-25" House Brackets made for Rohn 45 & Rohn 55

\$200.00 each = _____
plus \$40.00 S & H per bracket* = _____

Base Plates

Base Plates made for Rohn 25

\$150.00 each = _____
plus \$60.00 S & H per plate* = _____

Base Plates made for Rohn 45

\$250.00 each = _____
plus \$70.00 S & H per plate* = _____

Base Plates made for Rohn 55

\$250.00 each = _____
plus \$70.00 S & H per plate* = _____

Hinged Base Plates

Hinged Base Plates made for Rohn 25

\$250.00 each = _____
plus \$45.00 S & H per plate* = _____

Hinged Base Plates made for Rohn 45

\$370.00 each = _____
plus \$75.00 S & H per plate* = _____

* Within the 48 contiguous states only.

Sub total: _____
Michigan residents, add 6% Tax: _____

All prices subject to change

Total: _____

Ship to:

Name

Phone: () _____

Address

E-mail: _____

City

State

Zip Code

Send check or money order to: Norm's Fabrication, 2201 Porter Hwy., Adrian, MI 49221-9782
Payments are accepted through Paypal. Send to norm@normsfab.com.